

3-PIECE BALLVALVES SERIES 20D

Actuator direct mounting
Full bore and reduced bore
Stainless steel A351 CF8M

FIRESAFE certified acc. to BS 6755

In accordance with PED 97/23/EC

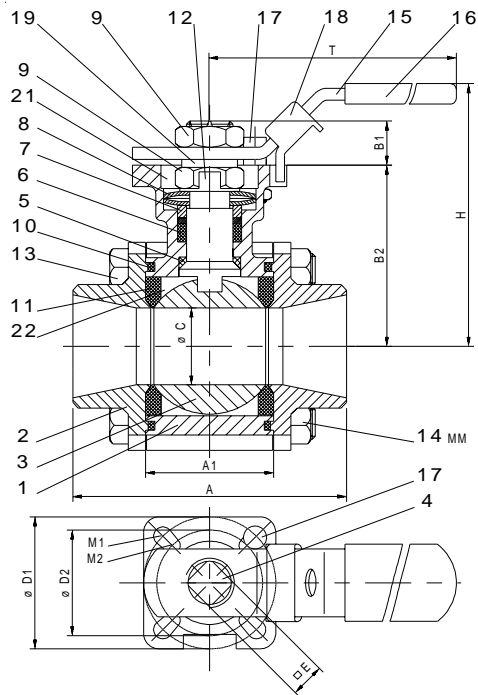
CE 0036

In accordance with ATEX 94/9/EC

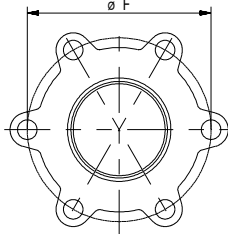


DN 08 - DN100 / PN 64

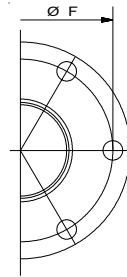
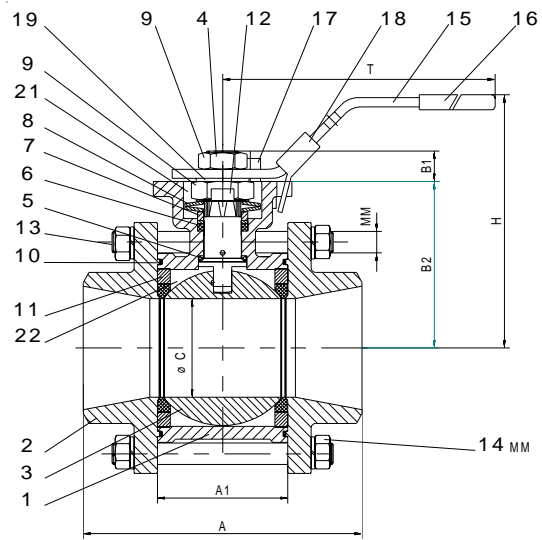
Fig. A20D antistatic / AF20D antistatic firesafe



DN 08 - DN 40 full bore
DN 20 - DN 50 red. bore
encapsulated bolts



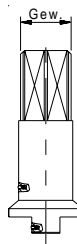
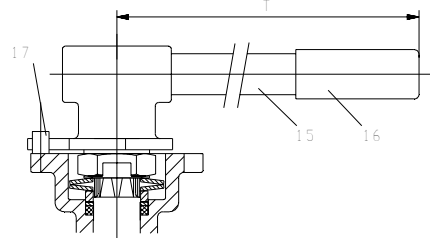
Shape A
DN 50 - 80 full bore



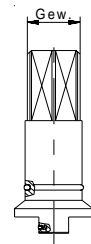
Shape B
DN 65 - 100 red. bore
DN 100 full bore

Stainless steel		
1	Body	A351 CF8M, 1.4408
2	End cap BSPP,NPT	A351 CF8M, 316
	Weld end	A351 CF3M, 316L
3	Ball	316
4	Stem	316
5	Stem seal	PTFE
6	Stem packing	CPTFE/ Graphite*
7	V-Ring	Graphite*
7	Stem seal follower	304
8	Belleville washer	301
9	Stem nut	304
10	Body seal	RPTFE/Graphite*
11	Seat	RPTFE/CPTFE*
12	Lock saddle	304
13/14	Bolt /Nut	304
15/16	Handle/Sleeve	304/Vinyl
17	Stop device	304
18	Locking device	304
19/20	Distancer - Reinforcing ring	304
21	Detective window	
22	Body cavity fillers opt.	PTFE
*	firesafe execution	

DN 65 - DN 100



Stem with 2 antistatic -
devices (standard)

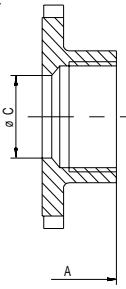


Stem with 1x antistatic
device and 1 x Viton
O-Ring (Option)

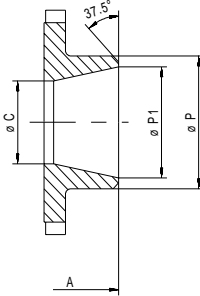
Reduced bore

DN	A SW BSPP NPT	A BW	A1	B1	B2	ØC	E- thread	H	T	ØF	G	MM	ISO Top	ØP	ØP1 DIN	ØP1 ISO	ØR	N
20 -3/4"	72.5	75	24.5	6.4	42.6	15	9 -7/16 UNF	76.6	139	-	16.1	M6	F03/04	27.2	21	23.7	27.4	13
25 -1"	85.4	90	31.4	8.6	46.8	20	9 -7/16 UNF	81.7	139	-	22.1	M8	F03/04	34	26.6	29.7	34.2	13
32 -11/4"	105.3	110	41.3	10.4	59.3	25	11 -9/16 UNF	98.3	165	-	25.1	M8	F04/05	42.7	35.1	38.4	42.9	13
40 -11/2"	111	115	48.4	10.4	62.6	32	11 -9/16 UNF	101.6	165	-	28.6	M10	F04/05	48.6	41	44.3	48.8	13
50 -2"	127.3	130	56.3	13.4	79	38	14 -M18x2.5	128	215	-	33.3	M12	F05/07	60.5	52.5	56.3	61	16
65 -21/2"	145	145	86.6	13.4	87.7	50	14 -M18x2.5	137	215	114	-	M14	F05/07	76.3	69.7	71.5	76.8	16
80 -3"	185	185	99	16.8	108.7	65	17 -M24x3.0	167.5	262	139	-	M16	F07/10	88.9	81.2	84.3	89.9	16
100 -4"	205	205	127	17.8	117.7	80	17 -M24x3.0	176.5	262	160	-	M16	F07/10	114.3	106.3	109.1	115.3	20

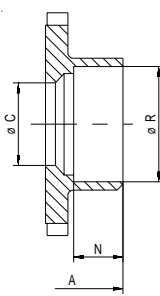
screwed end
BSPP, NPT



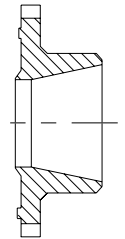
BW= BW end



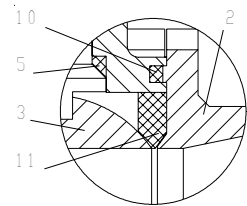
SW = Socket
weld end



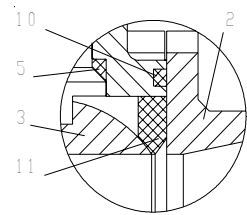
Firesafe
execution



AF20D
antistatic firesafe



A20D antistatic



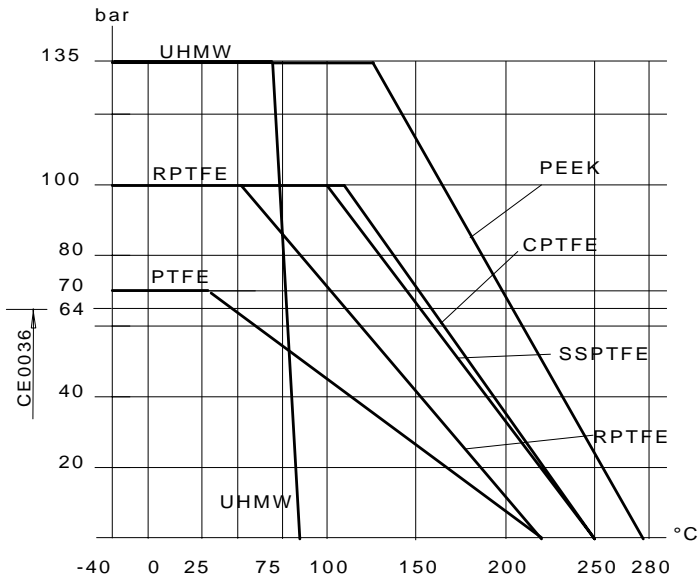
Full bore

DN	A SW BSPP NPT	A BW	A1	B1	B2	ØC	E- thread	H	T	ØF	G	MM	ISO Top	ØP	ØP1 DIN	ØP1 ISO	ØR	N
8 -1/4"	75	75	24.5	6.4	42.6	9.3	9 -7/16 UNF	76.6	139	-	19.1	M6	F03/04	13.7	9.3	10.3	13.9	10
10 -3/8"	75	75	24.5	6.4	42.6	10	9 -7/16 UNF	76.6	139	-	19.1	M6	F03/04	17.5	12.6	14	17.7	10
15 -1/2"	72.5	75	24.5	6.4	42.6	15	9 -7/16 UNF	76.6	139	-	19.1	M6	F03/04	21.7	15.8	18.1	21.9	10
20 -3/4"	85.4	90	31.4	8.6	46.8	20	9 -7/16 UNF	81.7	139	-	22.1	M8	F03/04	27.2	21	23.7	27.4	13
25 -1"	105.3	110	41.3	10.4	59.3	25	11 -9/16 UNF	98.3	165	-	25.1	M8	F04/05	34	26.6	29.7	34.2	13
32 -11/4"	111	115	48.4	10.4	62.6	32	11 -9/16 UNF	101.6	165	-	28.6	M10	F04/05	42.7	35.1	38.4	42.9	13
40 -11/2"	127.3	130	56.3	13.4	79	38	14 -M18x2.5	128	215	-	33.3	M10	F05/07	48.6	41	44.3	48.8	13
50 -2"	143	143*	71.4	13.4	87.7	50	14 -M18x2.5	137	215	114	-	M12	F05/07	60.5	52.5	56.3	61	16
65 -21/2"	185	185	86.6	16.8	108.7	65	17 -M24x3.0	167.5	300	139	-	M14	F07/10	76.3	69.7	71.5	76.8	16
80 -3"	205	205	99	17.8	117.7	80	17 -M24x3.0	176.5	375	160	-	M16	F07/10	88.9	81.2	84.3	89.9	16
100 -4"	240	240	127	16.8	133.7	100	17 -M24x3.0	192.5	375	190	-	M16	F07/10	114.3	106.3	109.1	115.3	20

* shape A (shape B=145)

weight kg	DN 8	DN10	DN15	DN20	DN25	DN32	DN40	DN50	DN65	DN80	DN100
full bore	0.9	0.9	1.1	1.6	2.3	3	4.4	5.6	11	14.4	24.6
reduced bore	-	-	-	1.1	1.9	2.6	3.5	4.8	6.1	11.9	15.2

Pressure / Temperature graph for full bore ballvalves



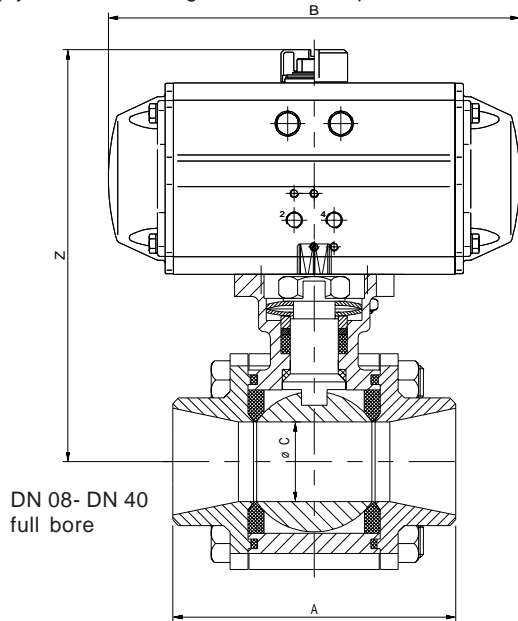
Code	Material	Seats
T	PTFE	PTFE virgin
R	RPTFE	PTFE glass reinforced
C	CPTFE	PTFE 25% carbon reinforced
S	SSPTFE	PTFE 50% stainless steel reinforced
P	PEEK	Poly ether ether ketone
U	UHMW	Polyethylen (Ultra high molecular)
	Material	Body seals
R	RPTFE	PTFE glass reinforced
G	Graphite	
	Material	Stem packing
C	CPTFE	PTFE 25% carbon reinforced
G	Graphit	

Kv-Values (m³/h) full bore valves (Volume of water passing through a valve at a pressure drop of 1 bar)
Break torques L_b (Nm) for lubricating medium

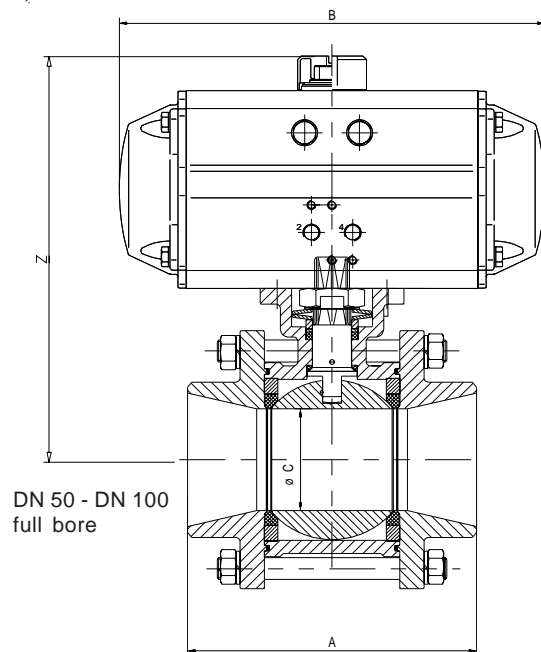
DN	8	10	15	20	25	32	40	50	65	80	100
Kv (m ³ /h)	8	8	11	28	50	71	96	205	275	500	800
Lb red.bore (Nm)	-	-	-	10	11	18	30	37	55	61	90
Lb full bore (Nm)	8	8	10	11	18	30	37	55	61	90	106

Series 20D with pneumatic actuator Air Torque

(Air supply 6bar, lubricating medium, max. pressure difference 10 bar)



DN 08- DN 40
full bore



DN 50 - DN 100
full bore

DN (full bore)	8	10	15	20	25	32	40	50	65	80	100
A (BW)	75	75	75	90	110	115	129.6	142.8	185	205	240
B (single / double acting)	141	141	141	159/141	211/159	211/159	248/211	269/211	315/248	315/248	315/248
Z (single / double acting)	132/132	132/132	132/132	152/136	182/165	185/168	235/210	223/210	256/244	293/253	309/269
Actuator Air Torque single acting	AT050 S12	AT050 S12	AT050 S12	AT100 S12	AT200 S12	AT200 S12	AT300 S12	AT250 S12	AT300 S12	AT350 S12	AT350 S12
Actuator Air Torque double acting	AT050D	AT050D	AT050D	AT050D	AT100D	AT100D	AT200D	AT200D	AT250D	AT250D	AT250D