

# STEM EXTENSION FIG. 1621 TO BALLVALVES SERIES 20

Stainless steel A351 CF8M

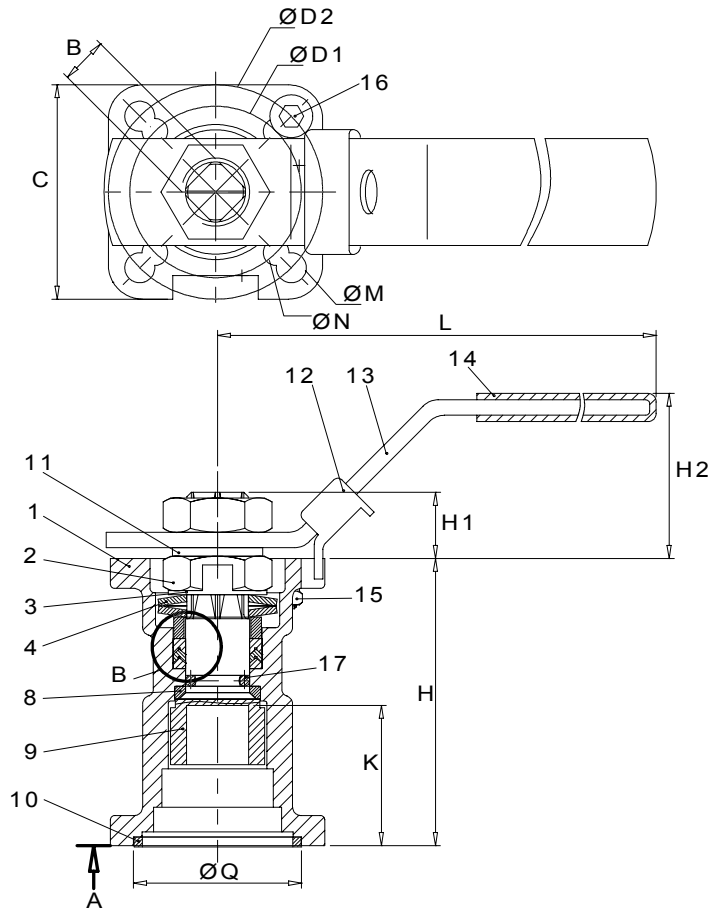
actuator direct mounting

Emission- / Leakage Control unit



for Ballvalves

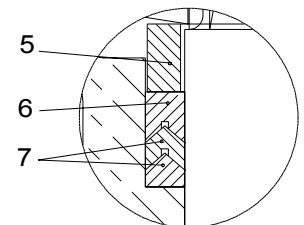
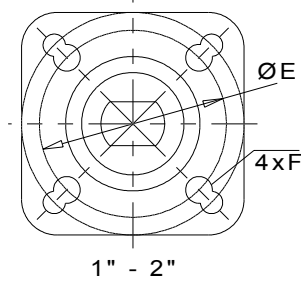
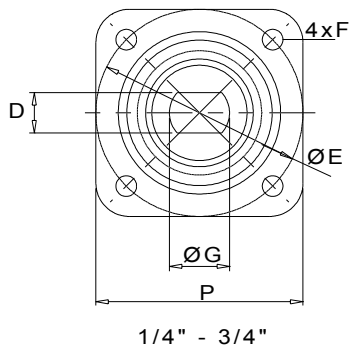
DN 10 - DN 50



- |    |                    |            |
|----|--------------------|------------|
| 1  | Body               | A 351 CF8M |
| 2  | Stem nut           | 304        |
| 3  | Saddle lock        | 304        |
| 4  | Belleville washer  | 301        |
| 5  | Stem seal follower | 304        |
| 6  | V - packing        | RPTFE      |
| 7  | V - packing        | PTFE       |
| 8  | Stem seal          | PTFE       |
| 9  | Stem               | 316        |
| 10 | Joint gasket       | PTFE       |
| 11 | Stem washer        | 304        |
| 12 | Locking device     | 304        |
| 13 | Handle             | 304        |
| 14 | Handle sleeve      | Vinyl      |
| 15 | Stop nut           | 304        |
| 16 | Stop device        | 304        |
| 17 | O-Ring             | Viton      |

View A

View B



| DN          | B  | C  | D   | ØD1 | ØD2 | ØE | F | G    | H    | H1   | H2 | K    | L   | ØM | ØN | P  | ØQ   | ISO top |
|-------------|----|----|-----|-----|-----|----|---|------|------|------|----|------|-----|----|----|----|------|---------|
| 08 - 1/4"   |    |    |     |     |     |    |   |      |      |      |    |      |     |    |    |    |      |         |
| 10 - 3/8"   | 9  | 42 | 6.5 | 36  | 42  | 36 | 6 | 9.5  | 62.7 | 6.1  | 34 | 7.4  | 139 | 6  | 6  | 42 | 25.2 | F03/04  |
| 15 - 1/2"   |    |    |     |     |     |    |   |      |      |      |    |      |     |    |    |    |      |         |
| 20 - 3/4"   | 9  | 42 | 6.5 | 36  | 42  | 36 | 6 | 9.5  | 62.7 | 6.1  | 34 | 19.9 | 139 | 6  | 6  | 42 | 25.2 | F03/04  |
| 25 - 1"     |    |    |     |     |     |    |   |      |      |      |    |      |     |    |    |    |      |         |
| 32 - 1 1/4" | 11 | 50 | 8   | 40  | 50  | 42 | 6 | 11.1 | 67   | 10.9 | 39 | 25.8 | 165 | 7  | 6  | 50 | 30.2 | F04/05  |
| 40 - 1 1/2" | 14 | 70 | 9.8 | 50  | 70  | 50 | 7 | 14.3 | 86   | 13.9 | 49 | 32.2 | 215 | 9  | 7  | 70 | 39.2 | F05/07  |
| 50 - 2"     | 14 | 70 | 9.8 | 50  | 70  | 50 | 7 | 14.3 | 86   | 13.9 | 46 | 27.5 | 215 | 9  | 7  | 70 | 39.2 | F05/07  |